

The background is a solid blue color. On the left and right sides, there are decorative patterns of overlapping kites (rhombuses) in various colors: yellow, magenta, cyan, and grey. The kites are arranged in a way that they appear to be part of a larger, repeating geometric structure. The text "Symmetry Kites!" is centered in the middle of the image in a white, bold, sans-serif font.

# Symmetry Kites!

# What is Symmetry?

the quality of being made up of exactly similar parts facing each other or around an axis.



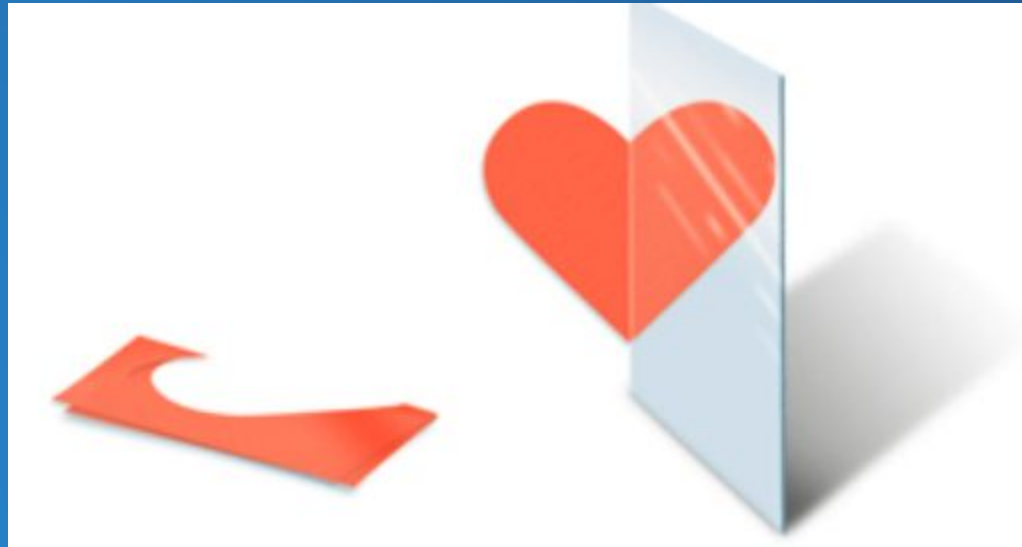
There are 3 Main types of Symmetry:

- Reflection
- Rotation
- Translation

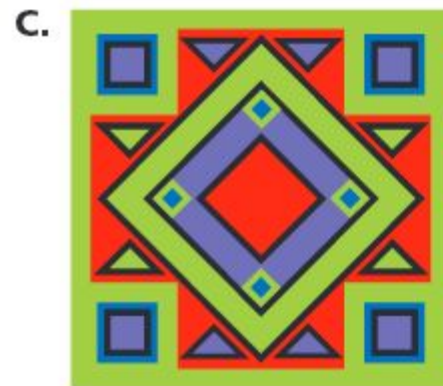
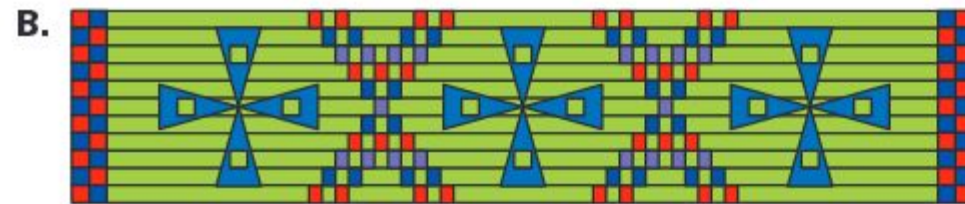
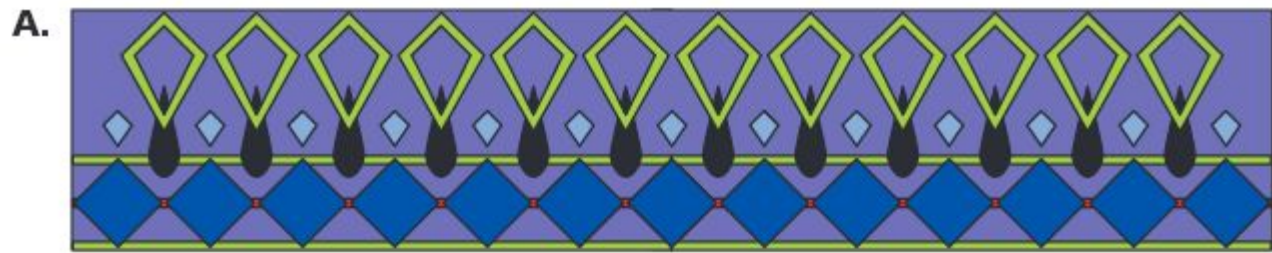


# Reflection

- Also called “Mirror” Symmetry or “Line” Symmetry.
- Example:

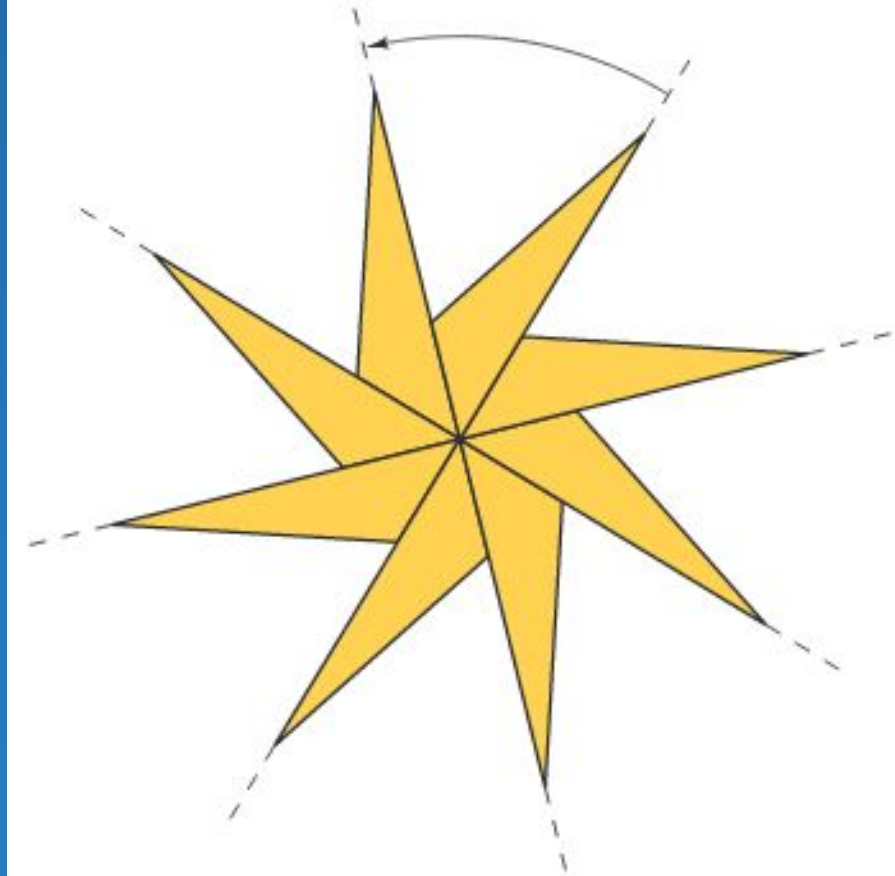


# Other Examples:

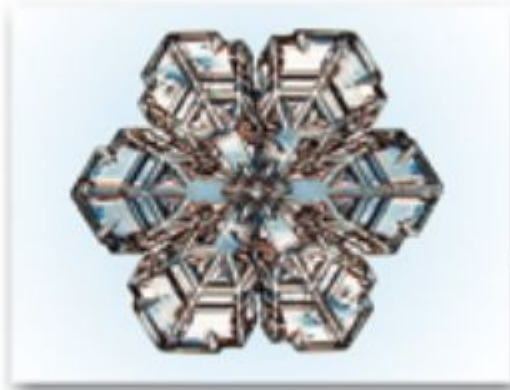


# Rotation

Like a  
pinwheel,  
the pattern  
rotates  
around a  
center



# Other Examples:



# Kaleidoscope Design:



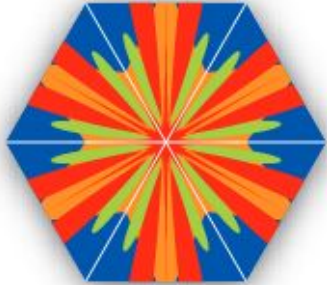
A



B



C



D



E

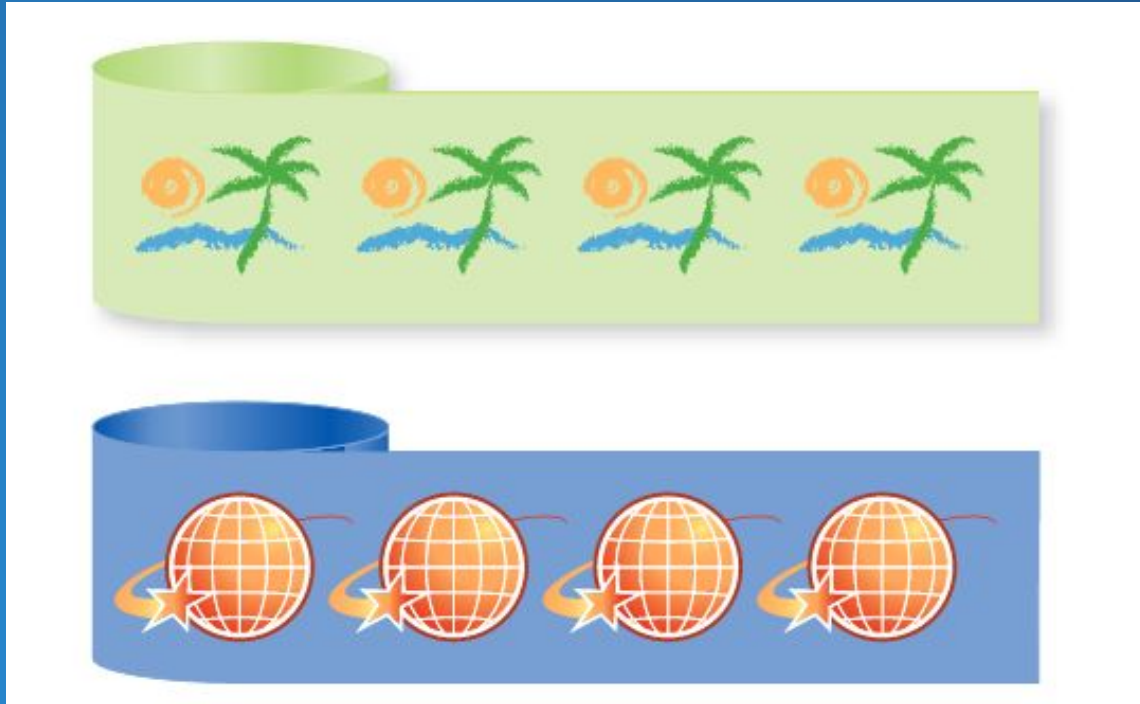


F



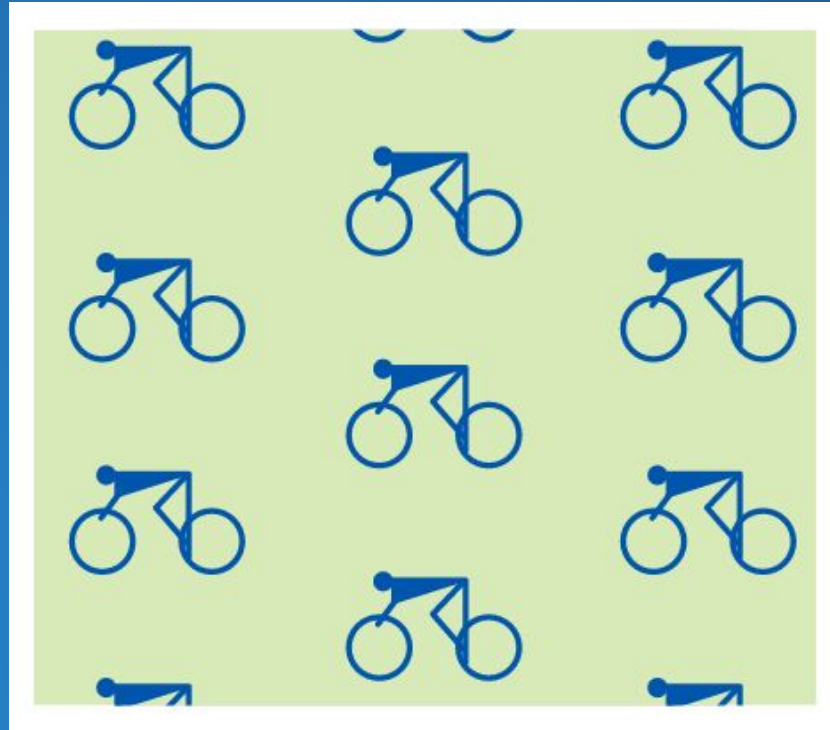
# Translation

-Designs which move in steps like wallpaper



# Translation

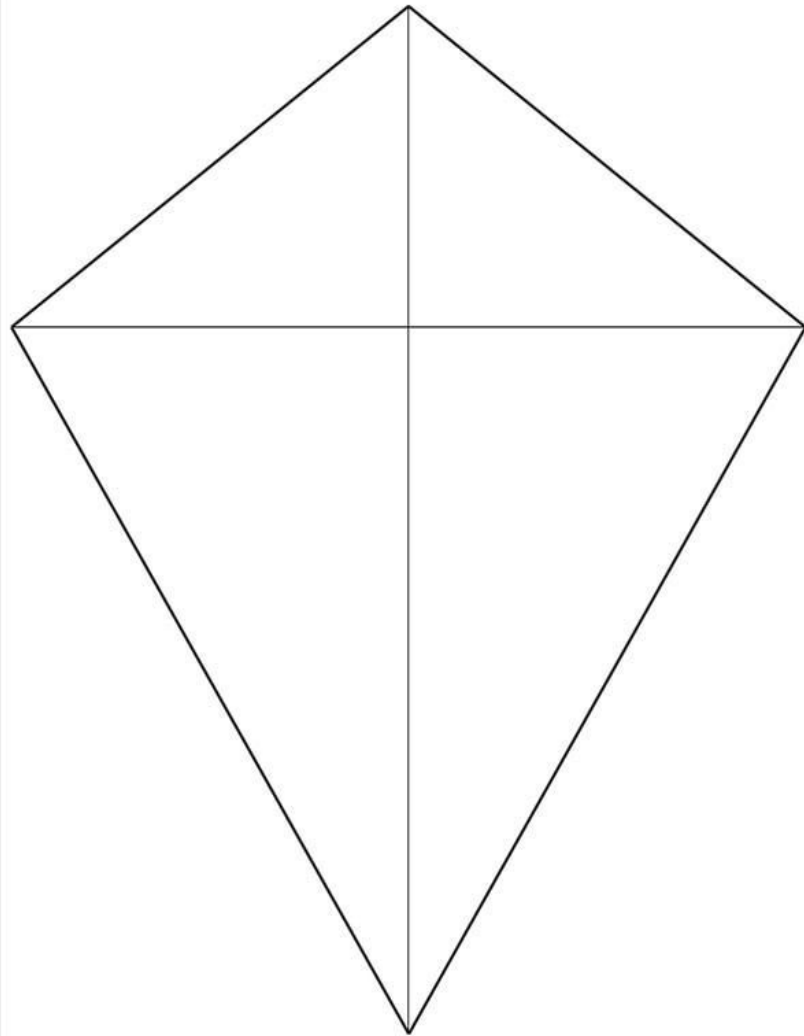
-Designs which move in steps like wallpaper



What type of symmetry is in this kite?



Download a  
Kite Pattern  
To color in...



# Color Symmetry

