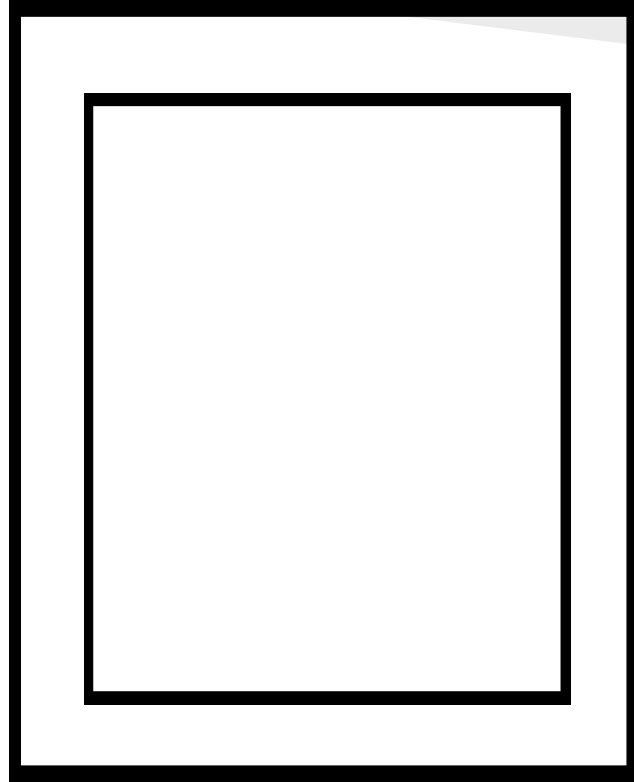


Stained Glass Flowers

Crayon Drawings, Paintings and Collage Paper

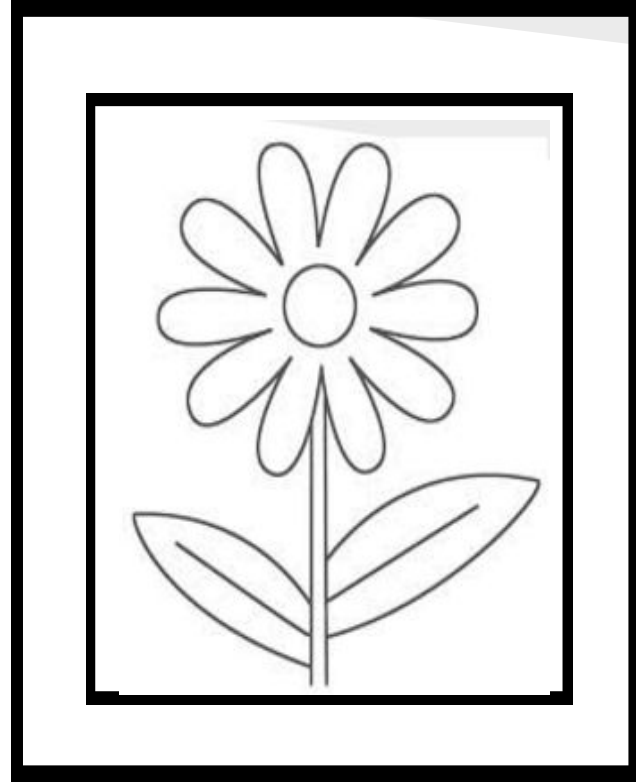
Start by drawing a border

Use your ruler to create
A border to put your
Flower inside



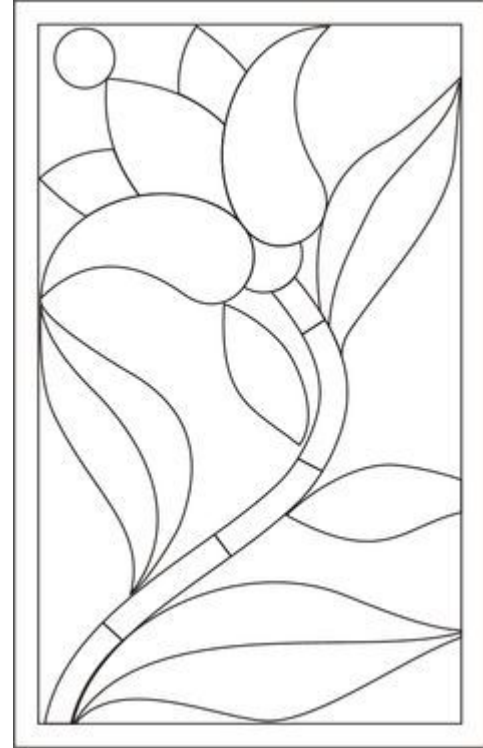
Next we add a flower

Your flower goes inside
The border



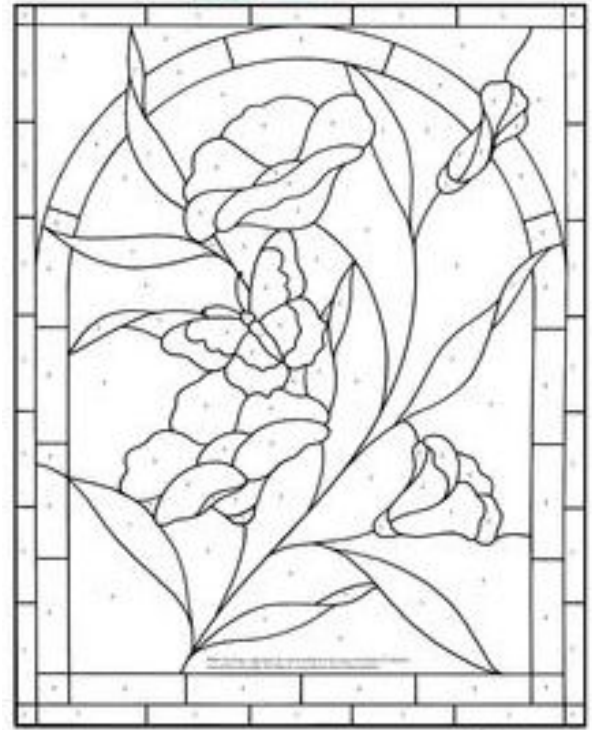
The flower...

Can be any type of flower...



When we add lines...

It will start to look
Like a Stained Glass Window



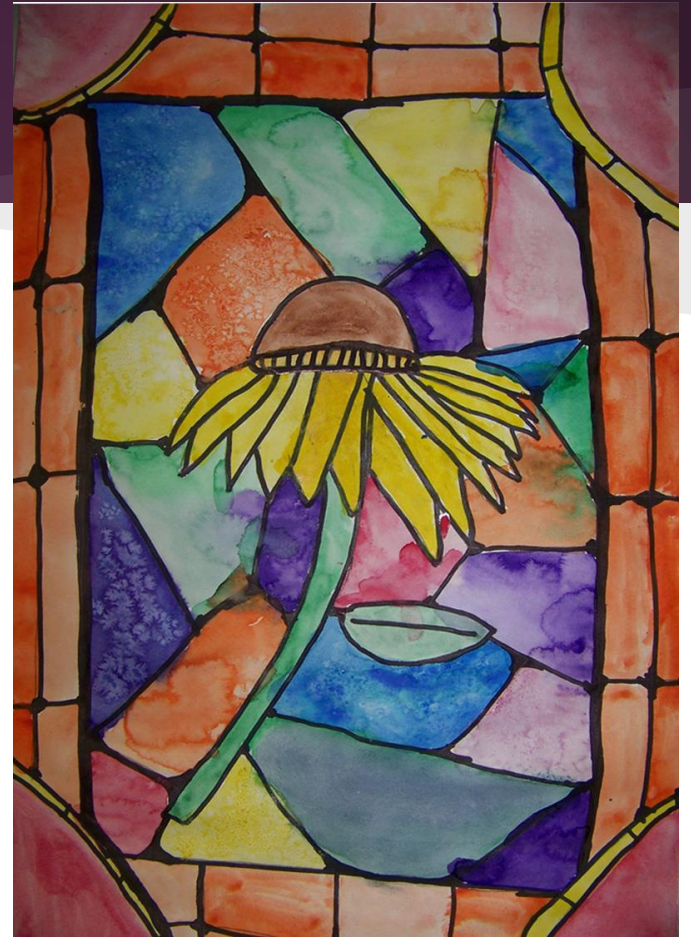
A Finished Example...

Looks like a Stained Glass Window

Lines drawn inside the border look like stained glass lead lines.

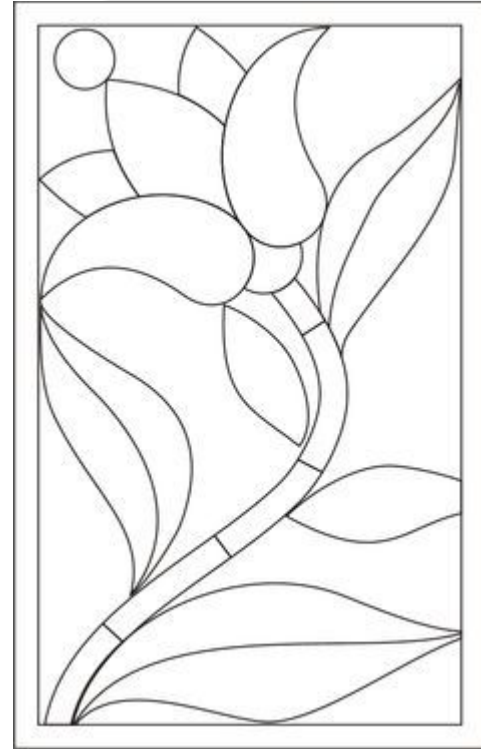


Finished Product:



Today's Project...

Draw our Flowers and Borders with pencil and go over them with black marker to color inside next week!



Student Examples



Student Examples



Student Examples



More Examples...



More Examples...



More Examples...

